



Instructions

JEEP JL "VERSATABLE"

Thank you for purchasing the JL VersaTable from AAL! We greatly appreciate your trust in our company. We take that purchase and your commitment to us very seriously. If you have any questions along the way, please don't hesitate to give us a call at 385.202.4188.

Please read the instructions thoroughly before starting this project. Some of the hardware is already installed on the product, but there is also a hardware pack including the main mounting bolts. To begin the installation, you must first remove the stock plastic panel on the inside of the tailgate. You can discard this panel and its hardware, as we will not be reusing it.

Tools Required:

There is more than one tool for every job, but below is the list of tools we use for this installation.

- 1/4" Drive Ratchet
- 4mm Allen Socket
- 5mm Allen Socket
- 10mm Combination Wrench
- 3/32" Allen Screwdriver
- Medium Strength Threadlocker (Not Included)
- Wire strippers/crimpers and connectors (Not Included)

Identify and Verify Hardware Included:

Along with the VersaTable, you should have the following hardware:

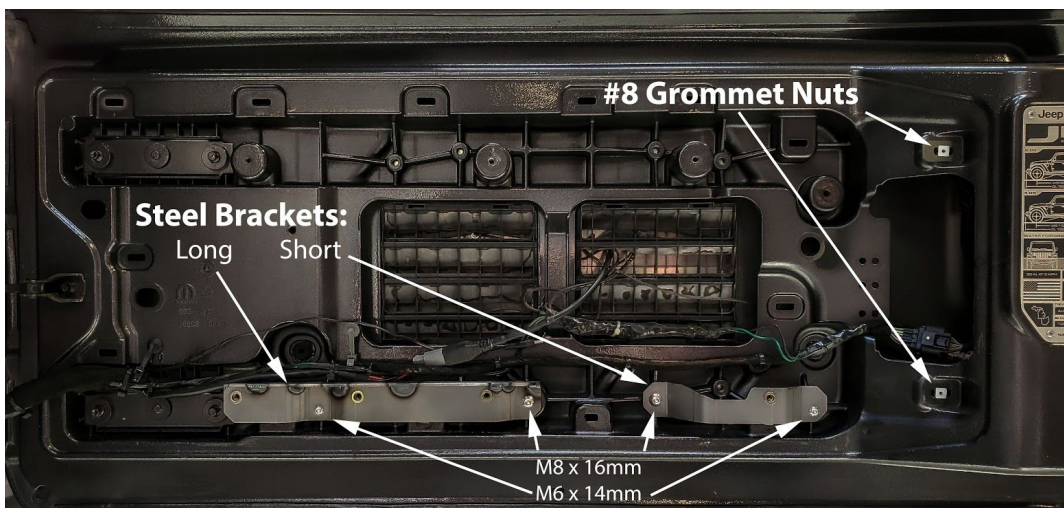
- (8) M6 x 14mm Button Head Bolts
- (2) M8 x 16mm Button Head Bolts
- (1) M6 Quick Latch Stud, Washer, Nut
- (2) 8-32 x 1" Button Head Bolts
- (2) #8 Stainless Washers
- (2) #8 Grommet Nuts
- (1) Long Steel Support Bracket
- (1) Short Steel Support Bracket
- (1) Shortened Spare Tire Bolt

See image on right for bolt identification.



Step 1: Installing Grommet Nuts and Steel Support Brackets

1. Install Grommet Nuts into the tailgate. The included (2) white plastic grommet nuts are intended to be inserted into the factory rectangular holes in the tailgate. When installing, make sure the nut is centered in the hole and that the locking tangs are on the top and bottom. These will be used with the (2) 8-32 x 1" Button Head bolts with (2) Stainless steel washers. ***Note the photo below for the location of each grommet nut.***
2. Identify and install the (2) different steel support brackets using (2) M6 x 14mm, and (2) M8 x 16mm button head bolts. These brackets will bolt directly to existing threaded bosses on the internal tailgate structure. ***See photo below for identification and orientation. It is recommended to use a medium strength threadlocker on all hardware being installed into the tailgate.***



Note: If you are running an OEM tire carrier with OEM bolts, you may run into a fitment issue where the tire carrier bolt protrudes through to the inside of the tailgate in one of the mounting locations. If you are experiencing this issue. Remove the tire carrier bolt and replace it with the supplied, cut down, OEM bolt. See the photo below.



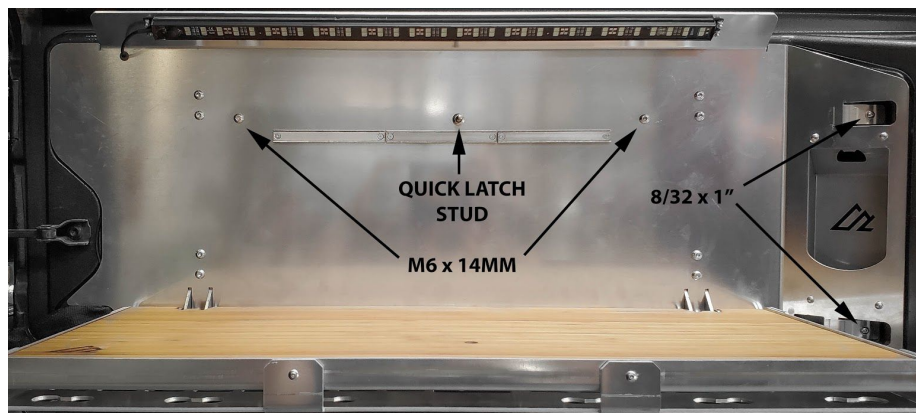


Step 2: Wiring

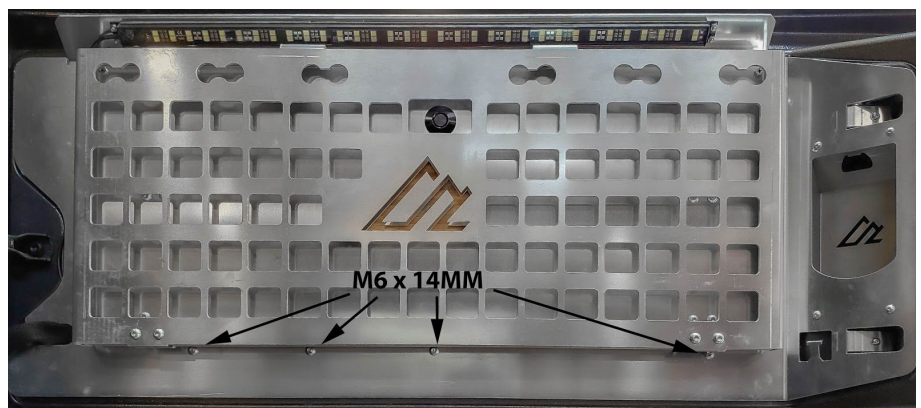
- Before installing the VersaTable, you will need to wire in the included surface light. All it needs is a fused 12v source to the RED wire and a ground connection to the BLACK wire. The light is turned on by simply pushing the weatherproof power button on the light. Everyone has their own way they like to wire-in accessories, so we leave this step up to the installer's discretion. We recommend using our "Jeep JL Dual ARB Compressor Mount" with optional Auxiliary Battery kit for wiring up rear accessories, but most people simply tie the surface light into the rear 12v port power.

Step 3: Final Assembly

- Once you have installed/tightened the steel brackets, installed the grommet nuts, and completed the wiring, it is time to hang the VersaTable on the tailgate. **Leave all bolts loose until the end. See photos to the right for bolt locations. You may have to reroute some of the OEM wiring inside the tailgate to make room for the internal supports on the VersaTable.**



1. After connecting the wiring, hold the VersaTable up to the tailgate. **Make sure the Bottle Opener goes into the void on the right side of the tailgate.** We have noticed it is easiest to install the Quick Latch Stud first to help hold the table in place while starting all other bolts.



2. Locate and install the (6) M6 x 14mm Button Head bolts using a 4mm Allen socket.
3. Locate and install the (2) 8-32 x 1" and (2) stainless steel washers using a 3/32" Allen wrench.
4. Once all bolts are started, tighten all bolts in the order of installation starting with the M6 button head bolts.
We strongly recommend using a medium strength thread locker on all hardware.
5. Once all bolts are tight, adjust and tighten the ball stud. ***Do not hold the ball stud by the ball, it will be damaged and cause latching issues.*** The ball stud may need to be adjusted in or out to achieve the proper latching. We have found the most consistent latch with a ball stud protrusion around 1 1/16" to 1 1/8". Once the ball stud is adjusted properly, you can tighten the jam nut to the panel with a 10mm wrench.

Congrats! You're all done!

Notes to the Installer

- **If you purchased the VersaTable with a raw finish, and are planning to powdercoat it, you will need to disassemble it. Disassembly steps are as follows:**

Make sure to retain all hardware for reassembly.

1. Use a 2.5mm Allen wrench to remove the MOLLE panel.
2. Using a 4mm Allen wrench and a 10mm combination wrench, remove the (2) steel Table Angle Stops from the MOLLE panel.
3. Using a 2.5mm Allen wrench and 7mm socket, remove the bottle opener, surface light and grommet.
4. Using a phillips head screwdriver, remove the (10) stainless steel wood screws securing the wood panel. Remove the wood panel.
5. Using a 1" wrench or Crescent wrench, remove the Quick Latch Button.
6. Using a 2mm Allen wrench and 5.5mm socket, remove the (3) Magnetic Strips from the Main Panel.
7. Using a 4mm Allen wrench and 10mm wrench, remove the (4) bolts holding the hinges together. Separate the table tray panel from the main panel. ***Note the tension on the hinge before disassembly, you will need to reassemble with similar tension. Make sure to note their position and remove the (4) hinge bushings from the steel hinge brackets.***
8. Using a 4mm Allen wrench and 10mm wrench or socket, remove the steel (6) hinge braces from the main panel and table tray panel.
9. You are now ready to paint or powder coat the VersaTable components.
10. To reassemble, simply reverse these steps. ***Make sure not to overtighten any hardware, especially the wood screws. Pay close attention to the tension on the hinge, as it should be tight, but still allow the table to unfold without any binding. Make sure the nutserts in the table tray panel are free of powdercoat/paint before reinstalling the MOLLE panel.***

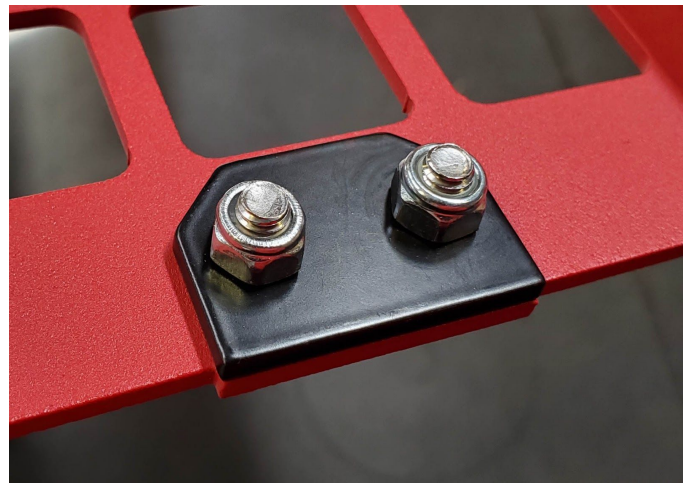
- **Troubleshooting the Quick Latch:**



- If you are having alignment issues with the Quick Latch, remove the MOLLE panel with a 2.5mm Allen wrench and the wood panel with a Phillips screwdriver. This will give you access to the Quick Latch button. Using a 1" wrench, socket, or Crescent wrench, you can loosen the Quick Latch button to gain some more adjustment. Using a 10mm wrench, you can also loosen and adjust the protrusion of the Quick Latch Stud. Once the shelf opens and closes smoothly, tighten the nuts, then reinstall the wood and MOLLE panels. ***Make sure not to overtighten any hardware, and reapply threadlocker before tightening.***

- Table Angle Stop Brackets:

- One of the features we are the proudest of is the fact that our VersaTable doesn't have any cables or other mechanisms between the table tray and the main panel. By design, the angle of the table should be 90° when in the open position. If, over time, the table begins to sag past 90°, no problem, because we have built in some adjustable angle stops. They are preinstalled and located along the bottom edge, inside the MOLLE panel. ***See image to the right.*** If your table begins to sag, using a 4mm Allen wrench and 10mm socket or wrench, you can simply loosen and adjust these stops outward to make contact with the main panel sooner; correcting the table angle.



- Wood Panel Maintenance:

- **Bamboo:** The bamboo shelf inlays come to you treated with "Watco - Butcher Block oil & finish". To maintain your bamboo shelf and prevent cracking, periodically wipe it down with mineral oil. Clean with soap and water and promptly dry.
- **Poplar:** The poplar shelf inlay has been stained and coated in polyurethane for durability. Maintenance should include periodical cleaning with soap and water.

Thank you!



At American Adventure Lab, we strive to improve anywhere we can. If you experience any issues with this product or have any suggestions, please let us know.

If you have any questions or concerns, please don't hesitate to reach out to us at 385.202.4188 or via email at

Support@erp.Adventurelab.com

Insert text here

